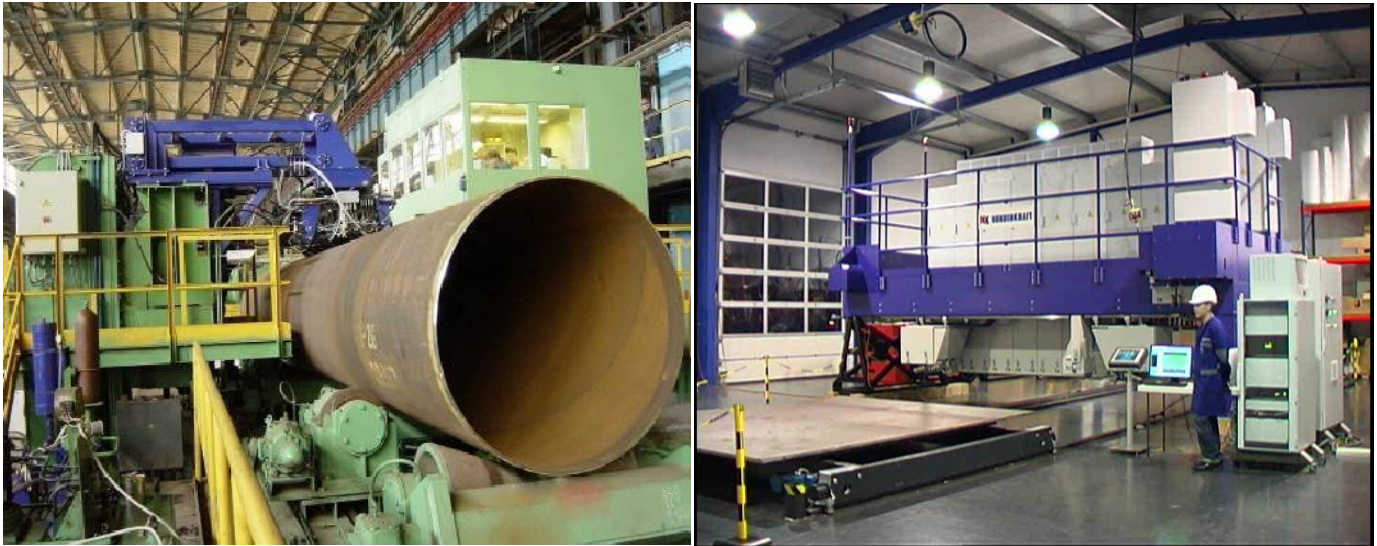


# ULTRASONIC TESTING SYSTEMS

## PIPE TESTING AND PLATE TESTING SYSTEM



Testing of pipes of various diameter, ERW pipes , spiral welded pipes, seam welded pipes ,seamless pipes , plates etc. with the latest new EMAT technology. No matter if seamless or welded tubes our systems can evaluate the body, ends, wall thickness, weld and heat affected zones. In addition, we offer our systems for tubes as inline or offline as well as semi automatic or fully automatic designs. EMAT can perform fully Automatic Ultrasonic testing of metals at a very wide range of temperatures. At the same time the material can be tested while moving at higher speeds. EMAT-technology is sophisticated but extremely reliable and simple for the practical utilisation. In fact EMAT technology is by far the most modern form of testing materials with ultrasound and provides multiple economical and environmental benefits.

Our pipe testing system or plate testing system can be offered with all three transducer technologies; Piezo probes, Phased-Array and EMAT probes. Simultaneously some of our machines are non contact testing systems, no water or other lubricants are needed as a medium to test plates or sheets. We have the ability to provide our customers with flexible testing conditions. Made in Germany and conforming to all international standards.

### Typical configuration of a Nordinkraft system is given below:

Test head with a set of ultrasonic transducers;

Test electronics;

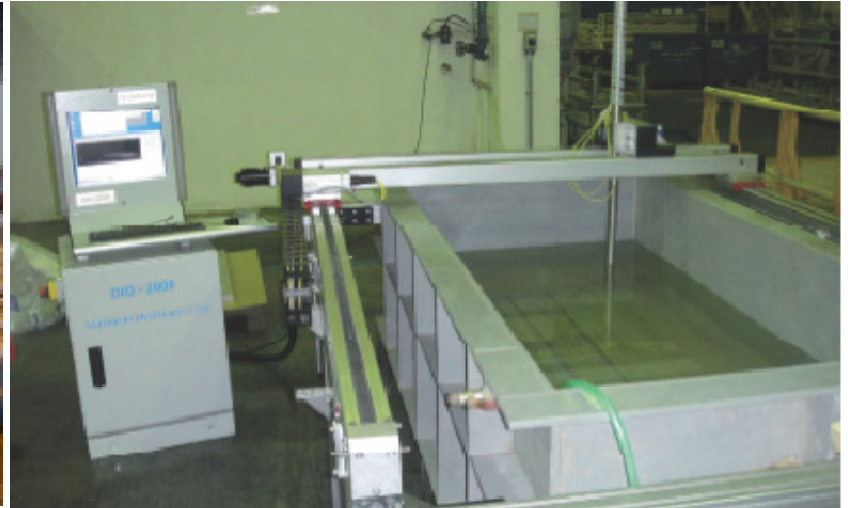
Control computing system;

Automatic system and power supply;

Sensitivity adjustment and calibration station;

Defect marker.

## BAR TESTING AND IMMERSION TESTING SYSTEM



Testing systems for bars and billets can be used for nearly every shape or size. With our systems the documentation of quality is instantaneously recorded, after the inspection scan has been completed. This allows one to ensure the quality at any given time. Our testing systems can detect core, longitudinal, transversal and numerous other types of random defects, thereby determining the quality of finished bar or billet products.

Immersion testing system for components testing with C- Scan software, hardware, motion and application.

We provide testing system for all applications like ;

**Automatic Ultrasonic Testing Device for Cylinder Testing**

**Automatic Ultrasonic Testing Device for Railway wheels**

**Automatic Ultrasonic Testing Device for Railway Axles**

**Automatic Ultrasonic Device for Billets Testing**

**Automatic Infra-Red Device for Billet Testing**